

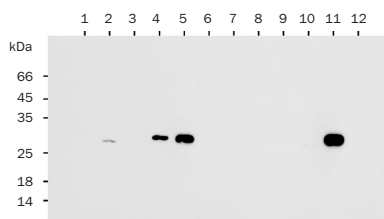
Anti-KillerRed antibody

Product	Cat.#	Size
Anti-KillerRed antibody	AB961	100 µg
	AB962	200 µg

The price does not include delivery. The price varies in different countries. Please contact your local distributor for exact prices and delivery information.

Use

- Western blot
- Immunoblotting
- ICC
- ELISA



Western blot detection of fluorescent proteins using Anti-KillerRed antibodies.

1 - TagCFP; 2 - TagGFP; 3 - TagYFP; 4 - TagRFP; 5 - TurboFP602; 6 - TurboGFP; 7 - TurboYFP; 8 - TurboRFP; 9 - PS-CFP2; 10 - Dendra2; 11 - KillerRed; 12 - EGFP. Recombinant proteins were purified from transformed *E. coli*. 25 ng of each protein were separated by SDS PAGE (14% acrylamide). The samples were boiled before loading. Antibody was used at a 1/10000 dilution. Secondary antibody: Goat anti-Rabbit HRP-conjugated IgG.

Description

Rabbit polyclonal antibody against KillerRed and JRed.

Specificity: The antibody has been selected to recognize both denatured and native KillerRed and JRed. The antibody shows little or no cross-reactivity with TagCFP, TagYFP, TurboGFP, TurboYFP, TurboRFP. The antibody shows cross-reactivity with TagGFP, TagGFP2, TagRFP, TurboFP602, and TurboFP635.

Immunogen: Full-length recombinant denatured KillerRed.

Antibody preparation: Full-length recombinant KillerRed was purified from transformed *E. coli* using organic extraction and hydrophobic chromatography. Antibody was produced in rabbits immunized with the recombinant denatured KillerRed and purified by KillerRed affinity chromatography.

Formulation: Lyophilized from the buffer containing 0.01M Na₂HPO₄, 0.1M NaCl, 0.25 mg/ml gelatin, and 1% trehalose; pH 7.4.

Reconstitution: Reconstitute with sterile water or 50% glycerol to a concentration of 1 mg/ml.

Storage: Lyophilized samples are stable for twelve months from date of receipt when stored at -20°C. The presence of silica gel drier is advisable.

Reconstituted with sterile water, antibody can be stored at +2 - +8°C for three months without detectable loss of activity.

Reconstituted with 50% glycerol, antibody can be stored at -20°C in a manual defrost freezer for six months without detectable loss of activity. Aliquot antibody upon reconstitution. Avoid repeated freeze / thaw cycles.

Recommendations for use

The antibody can be used to recognize KillerRed, JRed and their fusions.

Working concentrations:

For Western blot use at a dilution of 1:10000;

For ELISA use at a dilution of 1:20000;

For immunocytochemistry use at a dilution of 1:5000.

Note: Optimal dilutions/concentrations should be determined by the end user.

Tissue (cells) fixation for immunohistochemistry: Formaldehyde (formalin, paraform) fixation is recommended. For example, tissues can be fixed in PBS containing 4% formaldehyde for 10-15 min, treated with 0.1% saponin in PBS for 10-15 min, and washed three times in PBS.

Sample preparation for Western blot: To a sample containing 10-100 ng of a target protein, add an equal volume of 2x SDS-PAGE sample buffer. Heat the sample at 95°C before loading on a gel or spotting on a membrane (for dots).

Notice to Purchaser:

These products are intended for research purposes only.

MATERIAL SAFETY DATA SHEET INFORMATION: To the best of our knowledge, these products do not require a Material Safety Data Sheet. However, all the properties of these products (and, if applicable, each of their components) have not been thoroughly investigated. Therefore, we recommend that you use gloves and eye protection, and wear a laboratory coat when working with these products.